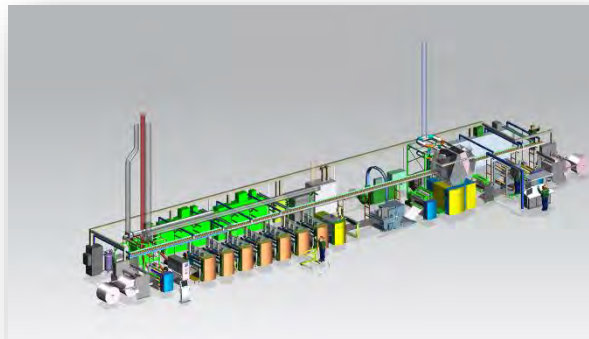
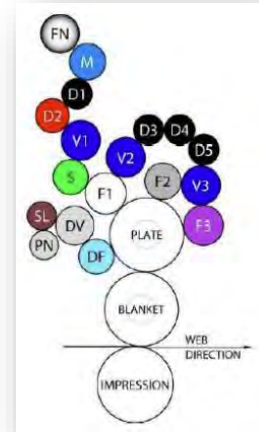




One Owner 2017 GOSS Vpak500 1051mm Press - Summary

- Unwinder
- Infeed/web guide
- Corona System
- Seven (7) Vpak500 Offset Print Units
- Provisions for interstation UV curing & chill
- Horizontal EB Flexo print unit
- EB curing unit
- Auxiliary #1 stack (web guide, auto-registration, ink density)
- Vertical solvent based Flexo print unit with hot air dryer
- Web guide
- Auxiliary stack #2 (video inspection system)
- Outfeed
- Rewinder
- Press desk, Goss Omnicon press control system with color control
- Three (3) sets of Repeats: 539mm, 659mm, and 740mm
- Technotrans dampener
- Technotrans chill pack
- GOSS ink canister pump system
- Off press printing plate installing unit
- Adhesive Flexo plate applicator
- Sleeve loading device
- GOSS pipe rack
- NELA variable cutoff plate bender
- Transformer for non-standard voltage



QUALITY YOU EXPECT * CUSTOMER SERVICE YOU DESERVE

World Headquarters

11369 Higgins Airport Way, Burlington, WA USA 98233
888.346.6119 www.impressionsworldwide.com

SE USA Service Facility

202 Enterprise Drive, Tupelo, MS 38804
888.346.6119 www.impressionsworldwide.com



QUALITY YOU EXPECT * CUSTOMER SERVICE YOU DESERVE

World Headquarters
11369 Higgins Airport Way, Burlington, WA USA 98233
888.346.6119 www.impressionsworldwide.com

SE USA Service Facility
202 Enterprise Drive, Tupelo, MS 38804
888.346.6119 www.impressionsworldwide.com



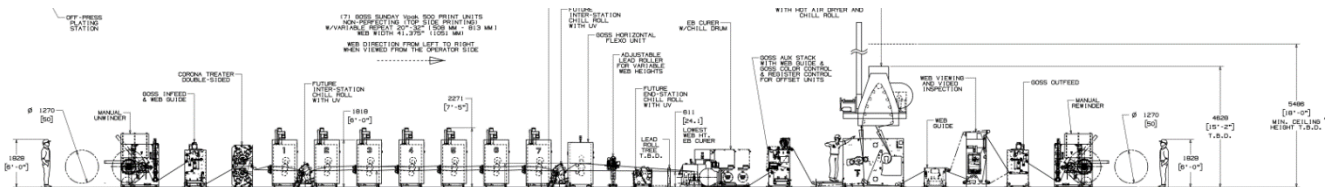
Vpak 500

VPAK 500 PRESS SYSTEM

Web Direction: Left to Right as seen from operator side
 Application: Film/Paper 12um to 30um (PET/OPP/BOPP)

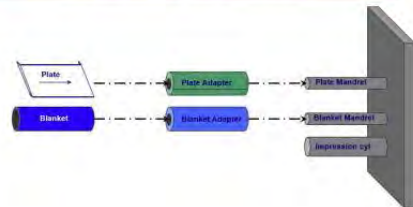
- Repeat length: 508 – 812.8 mm
- Maximum Web Width: 1051 mm
- Maximum Print Width: 1037 mm
- Designed Operating Speed:* up to 365 mpm
- Power Supply: 380v 60hz 3ph

*Speed is dependent upon equipment configuration, printing substrate, consumables, ink coverage, press staffing and limitations of any Purchaser supplied equipment.



Vpak Offset 1051mm Sleeves & Adapters

Ranges: 508-608mm, 609-710mm, 711-812mm



QUALITY YOU EXPECT * CUSTOMER SERVICE YOU DESERVE

World Headquarters

11369 Higgins Airport Way, Burlington, WA USA 98233
 888.346.6119 www.impressionsworldwide.com

SE USA Service Facility

202 Enterprise Drive, Tupelo, MS 38804
 888.346.6119 www.impressionsworldwide.com



Manual Unwinder and Infeed

ONE (1) MANUAL UNWINDER

ONE (1) GOSS AC DRIVEN INFEED WITH WEB GUIDE

- Adjustable tension control
- AC drive
- Free-standing drive enclosure
- Up to 5 pli tension control
- Accuweb web guide assembly



QUALITY YOU EXPECT * CUSTOMER SERVICE YOU DESERVE

World Headquarters

11369 Higgins Airport Way, Burlington, WA USA 98233
888.346.6119 www.impressionsworldwide.com

SE USA Service Facility

202 Enterprise Drive, Tupelo, MS 38804
888.346.6119 www.impressionsworldwide.com



Corona System

ONE (1) CORONA-PLUS STATION VE2C-A(C6)1420 PN (DOUBLE SIDED)

Treatment: Double sided
Ozone exhaust connection: 2 pcs Ø150 mm pipe branch
Electrode pivoting: Electro-pneumatic
Treatment width: 1051 mm
Type of electrode: 6 pcs. Ceramic electrodes (C64)
Diameter of backing roll: Ø196 mm
Roll / Covering: Aluminum / Bare roll

TWO (2) CORONA-PLUS RD62 VENTILATORS

Static pressure: 50Hz - 3000 PA / 60Hz - 3300
Air capacity: Max: 27,5 m³/min, Typical: 15 m³/min
Power line voltage: 380V / 60Hz / 3ph
Including: Installation kit, Motor protection, 2.5 m flexible tube and inlet pipe

Exhaust system is designed for ozone removal.

Offset Print Units

SEVEN (7) GOSS SUNDAY VPAK™ 500 NON-PERFECTING PRINTING UNITS

Vpak™ 500 is a variable size non-perfecting web offset printing unit designed specifically for packaging applications. Repeat length is established via fixed size mandrels and variable size sleeves for both the plate and blanket cylinders.

Plate sleeves are sized to accept a standard (.30mm) thick plate without packing. Plate stops are included as standard on the gear side of the cylinder

Blanket sleeves are designed to use GOSS approved gapless SUNDAY blankets

QUALITY YOU EXPECT * CUSTOMER SERVICE YOU DESERVE

World Headquarters

11369 Higgins Airport Way, Burlington, WA USA 98233
888.346.6119 www.impressionsworldwide.com

SE USA Service Facility

202 Enterprise Drive, Tupelo, MS 38804
888.346.6119 www.impressionsworldwide.com



Offset Print Units

- Motorized circumferential and lateral register adjustment, circumferential adjustment is ± 6.35 mm. Lateral adjustment is ± 3.17 mm
- Non print gap ≤ 2.54 mm
- Manual plate cylinder cocking with $\pm .30$ mm of adjustment
- Unit phasing register is obtained by unit drive synchronization
- Three-form roll ink train consists of 14 rollers: nine rubber covered rollers, three oscillating nylon covered vibrators, one metering roll and one hardened fountain roll
- Ink keys are 40 mm wide and are laser cut to provide a minimal gap between keys. Ink key adjustment is motorized and remotely operated.
- The vibrators are cooled by means of water circulation (chilled water supply by Purchaser)
- Ink Vibrator stroke ± 19 mm
- Water Vibrator stroke ± 9.525 mm, and is non-adjustable
- GOSS patented DUO-TROL® dampening system

Each dampener includes:

- One chrome covered pan roller with cocking adjustment
- One rubber covered slip roller
- One rubber dampener form roller
- One chrome vibrator roll
- Stainless steel water pan with insulated coating

QUALITY YOU EXPECT * CUSTOMER SERVICE YOU DESERVE

World Headquarters

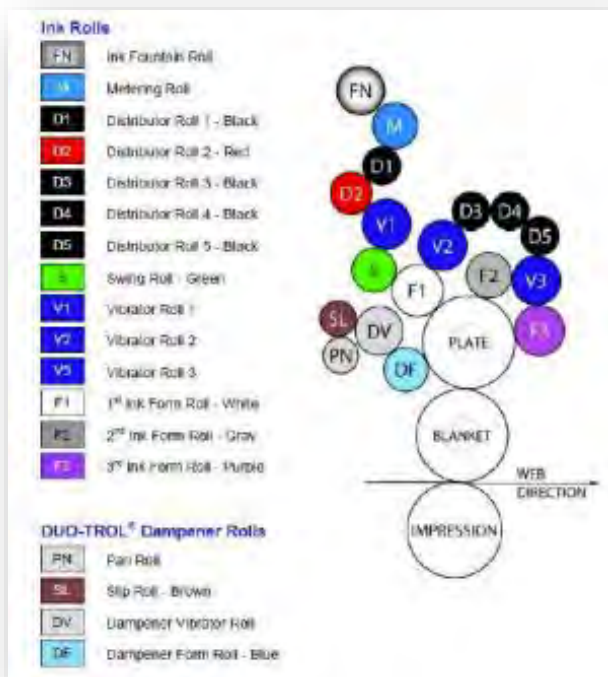
11369 Higgins Airport Way, Burlington, WA USA 98233
888.346.6119 www.impressionsworldwide.com

SE USA Service Facility

202 Enterprise Drive, Tupelo, MS 38804
888.346.6119 www.impressionsworldwide.com

Offset Print Units

- One four-button drive station is located at the work side exit of each unit. An additional drive station is located on the entrance side of each unit.
- The units are driven by individual motors (three AC drives per unit)
- Unit phasing register is via unit drive synchronization
- Motor driven oil pump for inker and dampener gear trains
- Automatic grease system (print cylinders, metering roller, pan roller, vibrators)
- Manual grease system (blanket washers if purchased, slip to pan roll adjustment, plate cocking)
- Unit guarding is controlled by safety switches
- Ink mist hoods (venting by Purchaser)
- Blanket sleeves are designed to use GOSS approved gapless SUNDAY blankets
- Blanket and/or blanket adaptor may be changed with web in units
- Special 'white layer' allows a range of repeat sizes to be used on the same blanket adaptor, reducing the number of unique blanket adaptors required



QUALITY YOU EXPECT * CUSTOMER SERVICE YOU DESERVE

World Headquarters

11369 Higgins Airport Way, Burlington, WA USA 98233
888.346.6119 www.impressionsworldwide.com

SE USA Service Facility

202 Enterprise Drive, Tupelo, MS 38804
888.346.6119 www.impressionsworldwide.com



Horizontal EB Flexo Unit

ONE (1) GOSS HORIZONTAL WEB PATH FLEXO UNIT

- Web width: 1051mm
- Repeat length: 508-812.8 mm
- Printing speed: up to 1200 fpm (365 m/min)
- Coating: EB
- Substrate: Film
- Web direction: From left to right, seen from operator side
- Unit is equipped with a quick sleeve change system on the anilox and plate cylinders
- One anilox ceramic covered sleeve and one flexo plate sleeve are provided as standard with flexo unit
- Coating unit is equipped with a Harris and Bruno doctor chamber/ blade assembly including tilt mechanism, Hydrocomp linear loading, and HyFlow chamber technology
- Plate cylinder is adjustable axially +/- 3 mm via a dc servo motor
- Print length is also adjustable
- Anilox cylinder is driven via servomotor and rotates at a slow speed during a press stop to prevent ink from drying on the anilox roll
- Coating unit is integrated into the main Goss Omnicon press control system, but also includes local HMI controls for adjustments at the flexo unit
- Note: Coating prior to curing of offset inks may cause quality issues. It is important to select the correct consumables, and certain ink/coating combinations may not be possible to utilize.

ONE (1) HARRIS AND BRUNO INK / COATING SUPPLY SYSTEM FOR HORIZONTAL FLEXO UNIT

- Remote Controlled PLC based logic
- Two H&B Smart Pumps™- first pump feeds the coating to the chamber and the second pump returns the excess back to the coating drum, maintaining a closed loop system. Chamber loading and valving controls are integrated into the circulator.
- PLC controls all chamber loading, valving, and plumbing functions. An integral level detector shuts the feed pump down if the coating level gets too high. Coating and wash-up cycles are completely automatic and controlled via wired remote. The operator does not have to change any hoses and the chamber automatically retracts once the wash cycle is complete.

QUALITY YOU EXPECT * CUSTOMER SERVICE YOU DESERVE



UV Curing System

ONE (1) INTERSTATION UV DRYING SYSTEM BETWEEN OFFSET UNITS 2&3, INCLUDING:

- One (1) UV Chill Roll, Chill Motor and Drive Controller
- One (1) Chill Pack
- Two (2) Prime UV Lamps

GOSS SPACE PROVISIONS FOR FUTURE INTERSTATION UV DRYER

- After 7th offset unit
- Space provision only – no provisions in system drive cabinets or switchboard

EB Curing System

ONE (1) ENERGY SCIENCES INC. (ESI) ELECTRON BEAM CURING SYSTEM

EZ 120/105/1100 side firing EZCure-CR 1050 mm wide EB system including:

- One EZCure-CR retractable accelerator.
- One Selfshield chill roll product handler.
- One model 125/500 gas insulated high voltage power supply (HVPS), which is cable connected to the accelerator. SF insulation gas not included.
- One computer controlled operating system using a Siemens S7-300 PLC. Continuous system operation, monitoring and self-protection through 24 analog and 32 digital input/output signals. Operator interface uses a Siemens 38cm LCD touch-screen display.
- One digital, low maintenance oxygen analyzer (0 – 1'000 ppm).
- One automated air/nitrogen flow control system for speed adjusted process zone environmental control/inerting.

QUALITY YOU EXPECT * CUSTOMER SERVICE YOU DESERVE

World Headquarters

11369 Higgins Airport Way, Burlington, WA USA 98233
888.346.6119 www.impressionsworldwide.com

SE USA Service Facility

202 Enterprise Drive, Tupelo, MS 38804
888.346.6119 www.impressionsworldwide.com



EB Curing System

- One standard spare parts kit including*
 - a. Electron gun spares kit
 - b. Complete set of filaments
 - c. Set of fuses
 - d. Six window foil changes
 - e. Complete set of O-rings
 - f. Pump oil for roughing pump

Complete list to be provided separately

- System complete with control and power console, and integral power, water and nitrogen distribution.
- Special tools and fixtures for servicing HVPS, window body, terminal and electron gun.
- Nip roll assembly for nipping web to chill roll.

QUALITY YOU EXPECT * CUSTOMER SERVICE YOU DESERVE

World Headquarters

11369 Higgins Airport Way, Burlington, WA USA 98233
888.346.6119 www.impressionsworldwide.com

SE USA Service Facility

202 Enterprise Drive, Tupelo, MS 38804
888.346.6119 www.impressionsworldwide.com



Auxiliary Stack and CLC

TWO (2) AUXILIARY STACK WITH WEB GUIDE

ONE (1) GOSS AUTOMATIC CLOSED LOOP REGISTER AND COLOR CONTROL

- One Register Control System including one camera with motorized transport bar
- One Color Control System including one camera with motorized transport bar
- Includes clear film option for offset units
- Mounted in Auxiliary Stack

Vertical Solvent Based Flexo Unit

ONE (1) GOSS VERTICAL WEB PATH FLEXO UNIT WITH TRESU GAS HOT AIR DRYER

- Web width: 1051mm
- Repeat length: 508-812.8 mm
- Printing speed: 365 mpm
- Coating: water based
- Curing system: hot air
- Substrate: Paperboard / Film
- Web direction: From left to right, as seen from operator side
- Unit is equipped with a quick sleeve change system on both the anilox and plate cylinders
- One anilox ceramic covered sleeve and one flexo plate sleeve are provided as standard with flexo unit
- Coating unit is equipped with a Harris and Bruno doctor chamber/ blade assembly including tilt mechanism, Hydrocomp linear loading, and HyFlow chamber technology
- Plate cylinder is adjustable axially +/- 3 mm via a dc servo motor
- Print length is also adjustable
- Anilox cylinder is driven via servomotor, and rotates at a slow speed during a press stop to prevent ink from drying on the anilox roll
- Coating unit is integrated into the main Goss Omnicon press control system, but also includes local HMI controls for adjustments at the flexo unit

QUALITY YOU EXPECT * CUSTOMER SERVICE YOU DESERVE

World Headquarters

11369 Higgins Airport Way, Burlington, WA USA 98233
888.346.6119 www.impressionsworldwide.com

SE USA Service Facility

202 Enterprise Drive, Tupelo, MS 38804
888.346.6119 www.impressionsworldwide.com



Vertical Solvent Based Flexo Unit

ONE (1) HARRIS AND BRUNO INK / COATING SUPPLY SYSTEM FOR VERTICAL FLEXO UNIT

- Remote Controlled PLC based logic
- Two H&B Smart Pumps™- first pump feeds the coating to the chamber, and the second pump returns the excess back to the coating drum, maintaining a closed loop system. Chamber loading and valving controls are integrated into the circulator.
- PLC controls all chamber loading, valving, and plumbing functions. An integral level detector shuts the feed pump down if the coating level gets too high. Coating and wash-up cycles are completely automatic and controlled via wired remote. The operator does not have to change any hoses, and the chamber automatically retracts once the wash cycle is complete.

Inspection System

One (1) AVT Argus Double Turbo Inspection System including:

- 3 Channel Digital Array camera
- Two 4K Color LCCD Cameras (100%)
- Two 24" TFT Screen Monitors
- Haze View Module
- Built-in Roll Reporting Software
- TransLight Module for translucent substrates
- JobRef PDF Verification Tool
- Work Flow Link- Press Side
- Stand Alone Camera Stand (floor mounted)

QUALITY YOU EXPECT * CUSTOMER SERVICE YOU DESERVE

World Headquarters

11369 Higgins Airport Way, Burlington, WA USA 98233
888.346.6119 www.impressionsworldwide.com

SE USA Service Facility

202 Enterprise Drive, Tupelo, MS 38804
888.346.6119 www.impressionsworldwide.com



Outfeed and Rewinder

ONE (1) GOSS AC DRIVEN OUTFEED WITH WEB GUIDE

- Adjustable tension control
- AC drive
- Free-standing drive enclosure
- Up to 5 pli tension control

ONE (1) MANUAL REWINDER

Tension Control

ONE (1) GOSS CLOSED LOOP TENSION CONTROL

The Goss system captures feedback from multiple tension points throughout the press system and automatically adjusts the appropriate servomotors to maintain the required tension between each element of the system.

Since each substrate has its own unique set of tension characteristics, the Goss presetting system allows different tension profiles to be stored for each different substrate. These tension profiles may then be called up each time that a new job is selected. Tension values for each element of the press system are displayed within the Goss Omnicon control screens, and the operator has the ability to make on the run tension adjustments as required.

QUALITY YOU EXPECT * CUSTOMER SERVICE YOU DESERVE



Press Control System

ONE (1) GOSS OMNICON © PRESS CONTROL SYSTEM

Press system operation combines functions from Omnicon Press Control and Color Control System from one Press Console

Omnicon Press Control System is software based for control of all machine functions

Features include:

- Windows XP embedded operating system
- Pendant mounted touch screen monitor
- Ergonomic easy access tray for keyboard and mouse
- Sequencing of print functions may be automatically or manually initiated
- Remote ink and water control adjustment, with the added capability to track press speed and provide instantaneous flood
- Motorized circumferential and lateral register are adjusted via touch screen control
- Good and total counters
- Press operations and faults displayed through touch screen monitor
- Bar graph display for ink key values as well as on touch screen
- Multiple language support
- Event Log – Screen Report
- Unit diagnostics – I/O Checks, interlocks, networks
- Remote diagnostics (via Purchaser supplied VPN)

The Color Control System provides remote adjustment, presetting and monitoring of ink key positions. Operator interface via flat panel display.

Features include:

- Console may be configured independently of other consoles
- Each console may be configured to control up to 16 inkers
- Support for GROUP and ALL ink key moves
- 100 previously run jobs may be recorded and stored on each console
- Remote jobs storage capability with Goss PPI (Pre Press Interface)
- Remote ink/water roll speed control
- Remote register control (lateral and circumferential)

QUALITY YOU EXPECT * CUSTOMER SERVICE YOU DESERVE

World Headquarters

11369 Higgins Airport Way, Burlington, WA USA 98233
888.346.6119 www.impressionsworldwide.com

SE USA Service Facility

202 Enterprise Drive, Tupelo, MS 38804
888.346.6119 www.impressionsworldwide.com



Press Control Desk

ONE (1) PRESS CONTROL DESK WITH QUALITY CONTROL CONSOLE (QCC)

Features a 24" industrial standard screen that provides access to operator screens for:

- Job set up
- Start up
- Run
- Service/maintenance/diagnostics

One (1) 42" Display monitor to display ink key zones and other key press data

One (1) Register and Color control screen

One (1) MCC Kiosk-style console is also included

Note: The MCC Kiosk features an industrial standard touch screen and can be used to access all the functions which are available on the main QCC.

QUALITY YOU EXPECT * CUSTOMER SERVICE YOU DESERVE

World Headquarters

11369 Higgins Airport Way, Burlington, WA USA 98233
888.346.6119 www.impressionsworldwide.com

SE USA Service Facility

202 Enterprise Drive, Tupelo, MS 38804
888.346.6119 www.impressionsworldwide.com



Support Equipment

ONE (1) TECHNOTRANS MULTI-ZONE TEMPERATURE CONTROL/DAMPENER MIXING SYSTEM

ONE (1) TECHNOTRANS CHILL ROLL PACK (chill water supply by Purchaser)

ONE (1) AFFINITY MOTOR COOLER (chill water supply by Purchaser)

SEVEN (7) GOSS BOWED ROLLERS (1 EACH PER OFFSET UNIT)

ONE (1) GOSS INK CANISTER PUMP SYSTEM FOR 7 SUNDAY OFFSET UNITS

Each offset print unit is supplied with two GOSS ink canisters.

ONE (1) OFF PRESS PRINTING PLATE INSTALLING UNIT

While printing plates may be installed when the printing plate adapters are still inside the Vpak printing units, the off press plate installing unit allows plates for the next print job to be mounted offline, reducing the make-ready cycle time between jobs.

Plates are pre-mounted on adapters, loaded on adaptor trolleys, and positioned for changeover to the next job while the current job is still running.

ONE (1) ADHESIVE FLEXPLO PLATE APPLICATOR FOR OFF PRESS PLATE INSTALLING UNIT

ONE (1) SLEEVE LOADING DEVICES

Once the plates are mounted on the installing unit, they can be loaded onto the sleeve-loading device and wheeled into position adjacent to each print unit to facilitate job changeover.

QUALITY YOU EXPECT * CUSTOMER SERVICE YOU DESERVE



Support Equipment

ONE (1) GOSS PIPE RACK

ONE (1) NELA VARIABLE CUTOFF PLATE BENDER

- Plate Cut-offs: 508mm to 812.8mm
- Includes 32 programmable formats
- Actual repeats to be confirmed at time of order
- Includes single bend on lead & trailing edges
- Electronic three-point register
- Stop locations and register edge to match those on designated CTP
- Manual plate insertion & removal
- Includes operator manual and complete documentation



www.impressionsworldwide.com



800-346-6119
360-466-5577



Dave Gilmore
VP Sales
dgilmore@impressionsworldwide.com
imPRESSions worldwide
11369 Higgins Airport Way
Burlington, WA 98233
USA



QUALITY YOU EXPECT * CUSTOMER SERVICE YOU DESERVE

World Headquarters

11369 Higgins Airport Way, Burlington, WA USA 98233
888.346.6119 www.impressionsworldwide.com

SE USA Service Facility

202 Enterprise Drive, Tupelo, MS 38804
888.346.6119 www.impressionsworldwide.com